



DEKRA Services Inc.
Customer Service 770-257-0107

TRACTOR LIMITED INSPECTION

INSPECTOR: 5508
INSPECTION ID
104787

INSP DATE | UNIT NUMBER | VIN (LAST 8) | PO NUMBER
10/30/2019 | 378 | 0000995 | 9750108005

Year, Make:	2015 INTERNATIONAL
Model:	PROSTAR
Full VIN:	345678456569995
Unit Number:	378
Engine Make/ Model:	CUMMINS ISX15
Engine Serial number:	79771614
Horse Power:	450
ECU Horse Power:	450
Clean air idle sticker:	Yes
Odometer:	555280
ECU Mileage:	555306
Engine Hours:	12025
Engine Brake:	EXHAUST
CARB Equipment:	DEF (Passed Snap Test)
Trans Make:	EATON/FULLER
Trans Model:	
Trans Type:	AUTO SHIFT
Trans Speed:	
Suspension:	AIR RIDE
Rear Ratio:	2.67
Front Axle (lbs):	12350
Rear Axle (lbs):	40000
Axle Type:	TANDEM AXLE
Wheelbase (Inches):	222
Sleeper:	INTEGRAL RAISED
Sleeper Size (Inches):	73
Dual Bunks	2
Tire Size (F):	295/75 R22.5
Tire Size (R):	445/50 R22.5
Tire Detail (F):	SYNERGY AP400
Tire Detail (R):	RECAPS

Frame:	STEEL
Bumper:	AERO
Exhaust:	SINGLE HORIZONTAL
Air Cleaners:	INTERNAL
Air Horns:	SINGLE
Fuel Tanks:	2
Tank Capacity:	100 (1) 100 (2) (3) (4)
Identification:	NONE
Power Windows:	Dual
Front Wheels:	ALUMINUM
Rear Wheels:	ALUMINUM
5th Wheel:	SOLID MOUNT
Power Steering	Yes
Tilt Steering:	Yes
Air Cond:	Yes
Cruise Control:	Yes
Radio:	AM/FM CD SAT
Seat Suspension:	DUAL AIR
Seat Hi-Back:	DUAL
Refrigerator:	Yes
Brakes Type:	ABS, AIR, DISK
Backing Plates:	FRONT N / REAR N
Steer Axle Brakes:	50% 50%
Drive Axle Brakes:	70% 70% (1)
	70% 70% (2)
	(3)
	(4)
	(5)

	STEER AXLE	DRIVE AXLE #1	DRIVE AXLE #2
RIGHT	15 / 32nd HIGHWAY / V 	24 / 32nd LUG / R1 	24 / 32nd LUG / R1
FRONT		24 / 32nd LUG / R1	24 / 32nd LUG / R1
LEFT	16 / 32nd HIGHWAY / V 	24 / 32nd LUG / R1 	24 / 32nd LUG / R1
		24 / 32nd LUG / R1	24 / 32nd LUG / R1

Brake Legend
BD = DRUM HAS MORE THAN 1/16 INCH LIP CL = CRACKED LINING LS = LEAKING SEAL(S)
Tire Legend
C = CUT D = DRY ROT F = FLAT M = MISMATCHED TIRES/CASING MA = MISMATCHED AXLES (FRONT vs. REAR) V = VIRGIN W = IRREGULAR WEAR R = RECAP: 1 = ONCE, 2 = TWICE, 3 = 3 TIMES
Tread Legend
H = HIGHWAY L = LUG

Additional Services	Requested	Status	Comments



DEKRA Services Inc.
Customer Service 770-257-0107

TRACTOR LIMITED INSPECTION

INSPECTOR: 5508
INSPECTION ID
104787

INSP DATE	UNIT NUMBER	VIN (LAST 8)	PO NUMBER
10/30/2019	378	0000995	9750108005

RECONDITIONING AND SUPPLEMENTAL ESTIMATE

ITEM	DESCRIPTION / COMMENTS	PART COST (\$)	LABOR
AXLES	6X2	0	0
BATTERY,S DEAD	HAD TO JUMP START	0	600
LED SCREEN	BLACKED OUT	0	500
INACTIVE CODES		0	0
REGEN	NEEDED	0	1500
LEFT FRONT OF ENGINE	CLASS 1 DRY OIL LEAK	0	500
TOTAL ESTIMATE		0	3100
TOTAL (PARTS + LABOR)			3100

COMMENTS:
UNABLE TO GET TRANS INFO



DEKRA Services Inc.
Customer Service 770-257-0107

TRACTOR LIMITED INSPECTION

INSPECTOR: 5508
INSPECTION ID
104787

INSP DATE	UNIT NUMBER	VIN (LAST 8)	PO NUMBER
10/30/2019	378	FN699995	9750108005



VIN NUMBER



TRANSMISSION AXLE



REAR AXLE



BUILD DATE



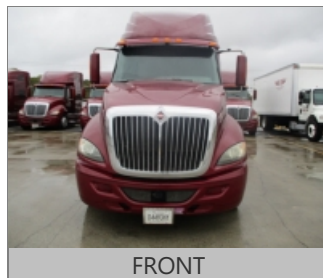
DASH DRIVERS SIDE



LEFT SIDE STRAIGHT



FRONT LEFT CORNER



FRONT



FRONT RIGHT



INT PASS DOOR



RIGHT SIDE STRAIGHT



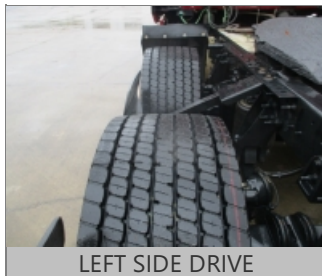
RIGHT REAR



RIGHT SIDE DRIVE



BACK SHOT



LEFT SIDE DRIVE



LEFT REAR CORNER



DEKRA Services Inc.
Customer Service 770-257-0107

TRACTOR LIMITED INSPECTION

INSPECTOR: 5508
INSPECTION ID
104787

INSP DATE	UNIT NUMBER	VIN (LAST 8)	PO NUMBER
10/30/2019	378	FN699995	9750108005



LEFT SIDE SLEEP AREA



RIGHT SIDE SLEEP AREA



FULL DASH



ODOMETER



LEFT SIDE STEER



ENGINE FAMILY



LEFT SIDE ENGINE



RIGHT SIDE ENGINE



RIGHT SIDE STEER



REGEN SYSTEM



ADDITIONAL 1



ADDITIONAL 2



ADDITIONAL 3



ADDITIONAL 4



ADDITIONAL 5



ADDITIONAL 6

